



**TIRE 16X7.50-8, 4 PLY KENDA**

08 - 17517



REPLACES KENDA 10500086181



**TIRE 24X12.00-12, 4 PLY TURF**

08 - 17601



THE GALAXY MIGHTY MOW 24X12.00-12 TUBELESS TIRE IS A SPECIFICALLY DESIGNED TIRE WITH A UNIQUE TREAD PATTERN FOR TURF WITH MAXIMUM TURF PROTECTION. HIGHLY DURABLE AND LONG LASTING. DELIVERED AS MANUFACTURED (NON COMPRESSED).



**TIRE 24X9.50-12, 6 PLY**

08 - 17602



THE GALAXY MIGHTY MOW 24 X 9.50 X 12 TUBELESS TIRE IS A SPECIFICALLY DESIGNED MOWER TIRE WITH A UNIQUE TREAD PATTERN FOR TURF WITH MAXIMUM TURF PROTECTION. HIGHLY DURABLE AND LONG LASTING, DELIVERED AS MANUFACTURED (NON COMPRESSED)



**TIRE 23X9.50-12, 4 PLY**

08 - 17603



THE GALAXY MIGHTY MOW 23X9.50X12 TUBELESS TIRE IS A SPECIFICALLY DESIGNED MOWER TIRE WITH A UNIQUE TREAD PATTERN FOR TURF WITH MAXIMUM TURF PROTECTION. HIGHLY DURABLE AND LONG LASTING. DELIVERED AS MANUFACTURED (NON COMPRESSED)



**TIRE 20X10.00-8, 4 PLY TURF**

08 - 17604



THE GALAXY MIGHTY MOW 20X10.00-8 TUBELESS TIRE IS A SPECIFICALLY DESIGNED MOWER TIRE WITH A UNIQUE TREAD PATTERN FOR TURF WITH MAXIMUM TURF PROTECTION. HIGHLY DURABLE AND LONG LASTING. DELIVERED AS MANUFACTURED (NON COMPRESSED)



**TIRE 18X8.50-8, 4 PLY TURF**

08 - 17605



THE GALAXY MIGHT MOW 18X8.50-8 TUBELESS TIRE IS A SPECIFICALLY DESIGNED MOWER TIRE WITH A UNIQUE TREAD PATTERN FOR TURF WITH MAXIMUM TURF PROTECTION. HIGHLY DURABLE AND LONG LASTING. DELIVERED AS MANUFACTURED (NON COMPRESSED)



**TIRE 16X7.50-8, 4 PLY**

08 - 17606



THE GALAXY MIGHTY MOW 16X7.50-8 TUBELESS TIRE IS A SPECIFICALLY DESIGNED MOWER TIRE WITH A UNIQUE TREAD PATTERN FOR TURF WITH MAXIMUM TURF PROTECTION. HIGHLY DURABLE AND LONG LASTING. DELIVERED AS MANUFACTURED (NON COMPRESSED)



**TIRE 16X6.50-8, 4 PLY**

08 - 17607



THE GALAXY MIGHTY MOW 16X6.50-8 TUBELESS TIRE IS A SPECIFICALLY DESIGNED MOWER TIRE WITH A UNIQUE TREAD PATTERN FOR TURF WITH MAXIMUM TURF PROTECTION. HIGHLY DURABLE AND LONG LASTING. DELIVERED AS MANUFACTURED (NON COMPRESSED)





**CASTER WHEEL BEARING FOR HUSTLER+MTD**

09 - 17660



REPLACES HUSTLER+MTD 039677, 741-3032



**SPINDLE BEARING FOR EXMARK**

09 - 17665



REPLACES EXMARK 1-303543



**SPINDLE BEARING FOR TORO**

09 - 17666



REPLACES TORO 113514



**SPINDLE BEARING FOR TORO**

09 - 17667



REPLACES TORO 109966



**UPPER SPINDLE BEARING FOR HUSQVARNA**

09 - 17668



REPLACES HUSQVARNA 532110485



**SNAP RING BALL BEARING FOR SNAPPER**

09 - 17669



REPLACES SNAPPER 1-0756

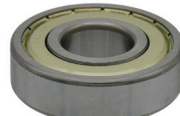


**DECK PULLEY BEARING FOR MTD**

09 - 17670



REPLACES SCAG 741-0524A



**SPINDLE BEARING FOR SCAG**

09 - 17671



REPLACES SCAG 48101



**SHAFT BEARING FOR BLUEBIRD**

09 - 17672



REPLACES BLUEBIRD 315



**CASTER YOKE FOR HUSTLER**

10 - 17135



REPLACES HUSTLER 110116



**DECK LIFT SPRING FOR WRIGHT**

10 - 17656



TOTAL LENGTH 228.6MM, COIL LENGTH 156.21MM, COIL DIAMETER 42.93MM, WIRE DIAMETER 5.54MM

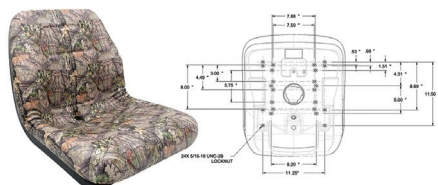


**HYDRO FILTER KIT FOR TORO**

19 - 17623



REPLACES TORO 144-3842, 132-4743, 136-5409



**VINYL CAMO 18" HIGH BACK SEAT**

21 - 17763



18" HIGH BACK CAMO VINYL

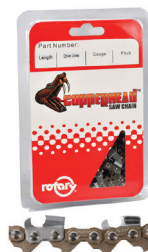


**HELIX VALVE STEM INSTALLATION TOOL**

32 - 17692



HELIX VALVE STEM INSTALLATION TOOL WITH SWIVEL END. ELEVEN INCHES IN LENGTH FOR EXCELLENT LEVERAGE. KNURLED HANDLE FOR SURE GRIP. MAKES VALVE STEM INSTALLATION A BREEZE



**0.50 3/8" STD 81 LKS CHISEL W/O BUMPER LINK**

34 - 7424081



FITS MANY BRANDS OF SAWS